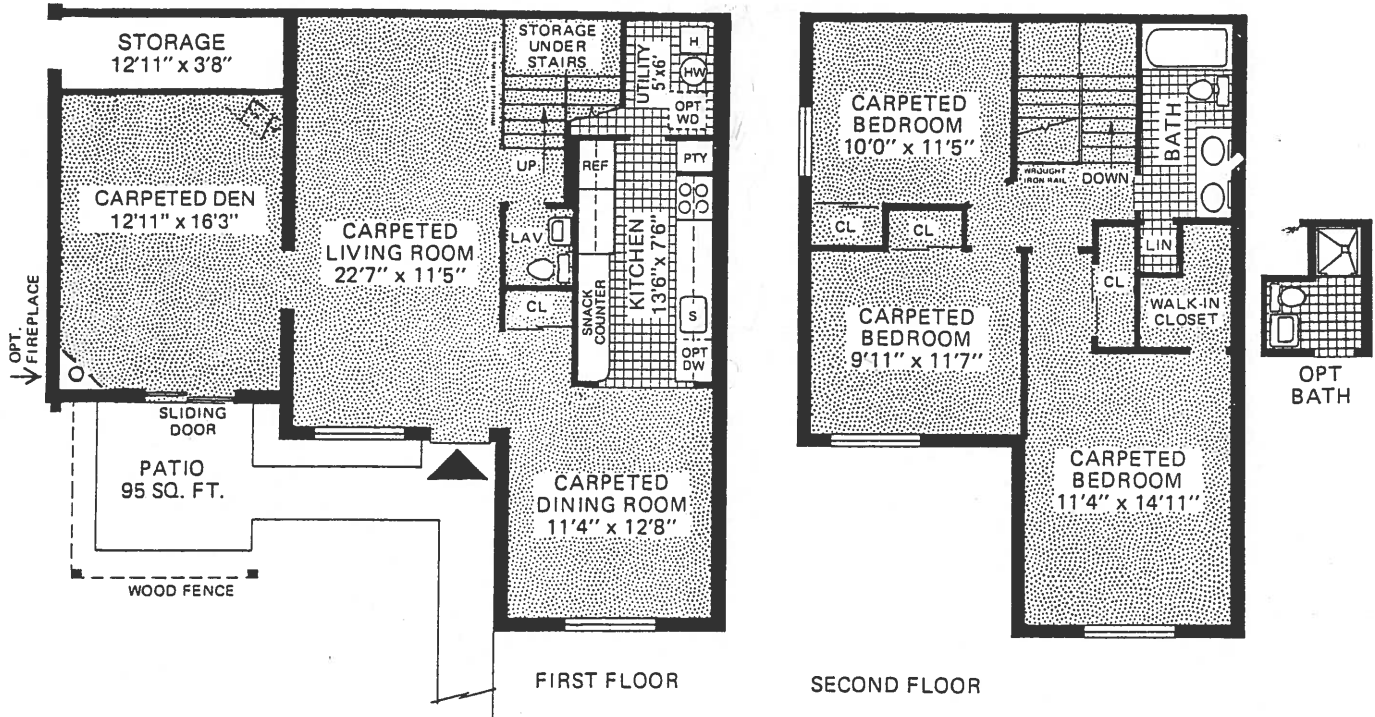


birchwood at brettton woods

The Dalton (E-D)



VARIOUS UNITS MAY HAVE FRONT ENTRANCE STEPS OR LOW RETAINING WALLS.
 PATIOS MAY BE RE-LOCATED TO SUIT SITE CONDITIONS.
 UNITS MAY BE LEFT OR RIGHT HANDED DEPENDING ON SELECTION.

SALES OFFICE
 AND MODEL HOMES
 Open Daily and Sunday
 Phone (516) 732-8100

BIRCHWOOD AT BRETTTON WOODS
 Mooney Pond Road
 1 mile east of Patchogue-Mt. Sinai Rd.
 Coram, N.Y.

SPONSOR
 BIRCHWOOD BRETTTON WOODS CORP.
 410 East Jericho Turnpike
 Mineola, L.I., N.Y.
 (516) 747-7880



Architect
 Siegmund Spiegel A.I.A.



This advertisement is not an offering which can be made only by Form 1 Prospectus, N.Y. #618 or 573