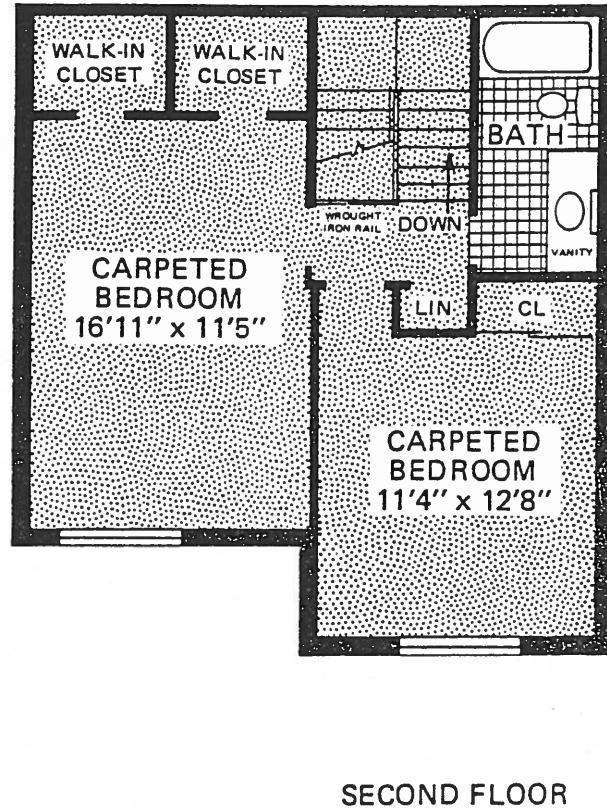
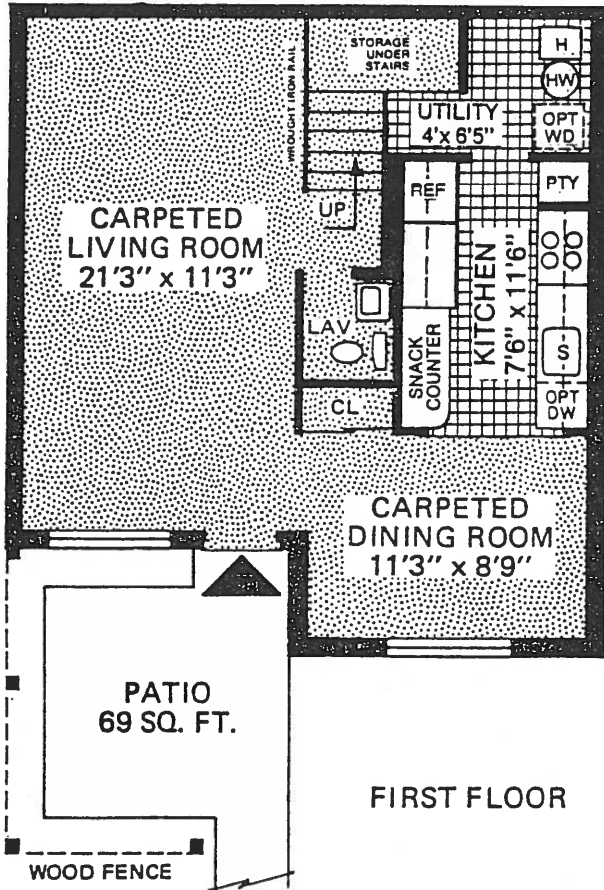


# birchwood at bretton woods

## The Cambridge (C)



VARIOUS UNITS MAY HAVE FRONT ENTRANCE STEPS OR LOW RETAINING WALLS.  
 PATIOS MAY BE RE-LOCATED TO SUIT SITE CONDITIONS.  
 UNITS MAY BE LEFT OR RIGHT HANDED DEPENDING ON SELECTION.

SALES OFFICE  
 AND MODEL HOMES  
 Open Daily and Sunday  
 Phone (516) 732-8100

BIRCHWOOD AT BRETTON WOODS  
 Meoney Pond Road  
 1 mile east of Patchogue-Mt. Sinai Rd.  
 Coram, N.Y.

SPONSOR  
 BIRCHWOOD BRETTON WOODS CORP.  
 410 East Jericho Turnpike  
 Mineola, L.I., N.Y.  
 (516) 747-7880



Architect  
 Sigmund Spiegel A.I.A.



This advertisement is not an offering which can be made only by Formal Prospectus, N.Y. #618 or 573